



1 Before calibration

- Lithium chloride must be prescribed. Standard dose is 0.300mmol, **2.00ml**.

Please note: Dose should not be limited to 2ml (locked), as additional doses may be needed in one calibration. Maximum dose allowance is 20ml in 24 hours (10 calibrations).

2 Initiate calibration on screen

- Using the Navigation Menu  select  Inject 
- Enter recent Hb, sodium and press large green tick 

3 Collect items

- Flow regulator.
- Lithium.
- Sensor (30 minutes before to reach room temperature).
- Injectate kit.
- 4 x luer lock syringes (1 already in kit).



4 Fill syringe

- Fill all four syringes each with 20ml saline.
- Label and set aside on clean area.

(If your unit does not have luer lock syringes you can fill the one provided and refill when needed, keeping on clean area.)



5 Prepare lithium

- Withdraw all 10mls lithium from vial, using 10ml syringe and safety straw.
- Attach safety valve as shown and add 3ml syringe.
- Draw up the standard dose 0.300mmol, 2.00ml lithium into 3ml syringe.
- Label (provided) and set both syringes aside on clean area. You may need to draw a second dose.



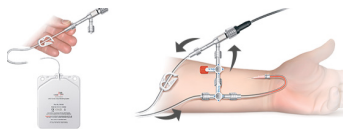
6 Prime sensor

- Attach 20mls syringe of saline to opposite end of red cap and leave red cap on (as shown in picture).
- Keeping sensor upright, flush with saline to wet and remove air bubbles. Keep red cap on.
- Catch saline in dish.



7 Connect and flush sensor with saline

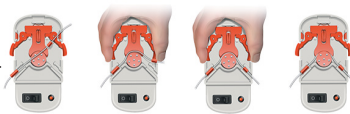
- Remove syringe and attach drain bag to sensor.
- Attach other sensor port to 3 way tap on arterial line.
- Close 3 way tap to patient and flush sensor from transducer bag, to remove any new air bubbles.
- Turn tap back to patient and re-establish BP trace.
- Remove red cap and attach black sensor interface cable from LiDCO (push fit). Sensor interface cable connects to interface pod and then to monitor, you will now notice 2 green ticks on screen.



Please note: you do not need an additional 3 way tap, as shown in picture.

8 Fit tube to pump

- Fit tube of drain bag to pump, as shown in picture.
- Insert large red lug into large slot on pump with prong facing up.
- Press clamp and push tubing around wheel.
- Insert small red lug into small slot, prong up.



9 Prime park & ride

- Remove tubing labelled 'park & ride' from kit.
- Attach second 20ml syringe of saline and flush.
- Attach other end of tubing to venous access port.
- Ensure no other pharmacological substance is in the port/line.



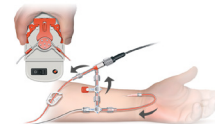
10 Inject lithium into line

- Remove 20ml syringe from park & ride and attach 3ml syringe, containing **2ml** lithium previously prepared.
- Push lithium into park & ride (which will now sit inside the park & ride).
- Attach 3rd 20ml saline syringe to park & ride—**DO NOT INJECT YET**.



11 Prime sensor with blood

- Open the 3 way tap to allow blood to pass over the sensor.
- Squeeze clamp on flow regulator and allow blood to pass over the sensor for a few seconds.
- You will notice the screen on LiDCO temporarily displays 'stabilising'. This will return to 2 green ticks once clamp is released.



12 Injecting the lithium

- Turn on the flow pump which will draw blood over the sensor and wait for the signal to stabilise and display inject.
- Press **Inject** and inject the full 20ml of saline which will push the 2ml of lithium into the patient.
- You will see the curve start to appear.
- Flush the sensor and arterial line when instructed remembering to squeeze the flow pump clamps to allow saline to flow. Then re-establish the arterial trace.
- Press 'Auto Calibrate' and wait. You may be required to repeat the calibration to confirm the readings. Go back to step 10.
- Press 'Finish Calibration'.
- Calibration recommended again in 24 hours.

