

How to save lives in Sepsis



World Health Organization

RECOGNISES SEPSIS AS A GLOBAL PRIORITY¹

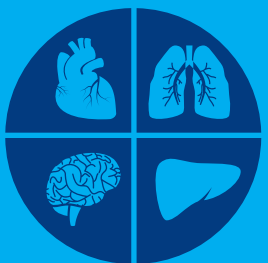
ONLY **50%** respond to fluids



! Universal fluid admin in Sepsis carries considerable risk^{2,3}

FLUID?
NO
YES

"It is likely that aggressive fluid therapy increases morbidity and mortality in sepsis"^{2,3}



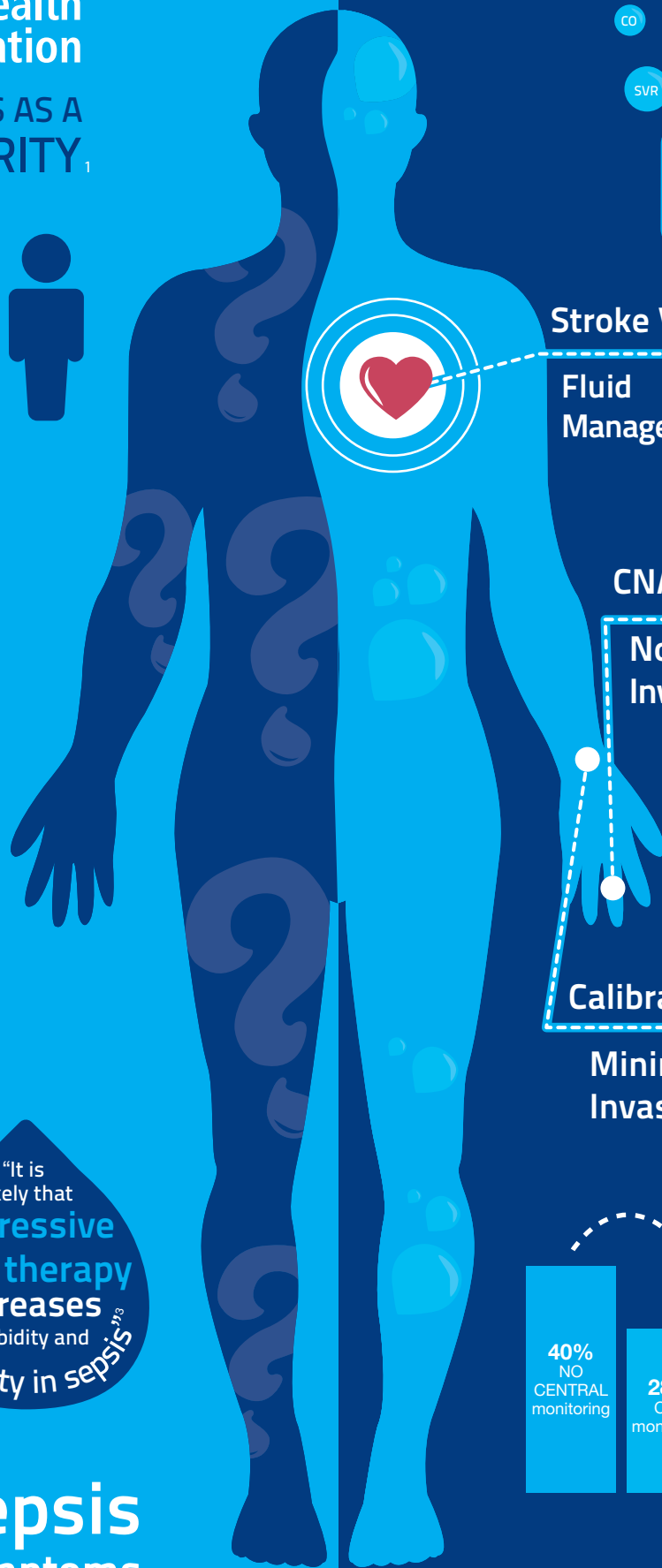
Sepsis Symptoms

LiDCO hemodynamic monitoring reduces mortality in Sepsis

ESICM CONSENSUS SUGGEST

CO SVV SVR SV PPV

"We suggest using dynamic over static variables to predict fluid responsiveness"



Stroke Volume

Fluid Management



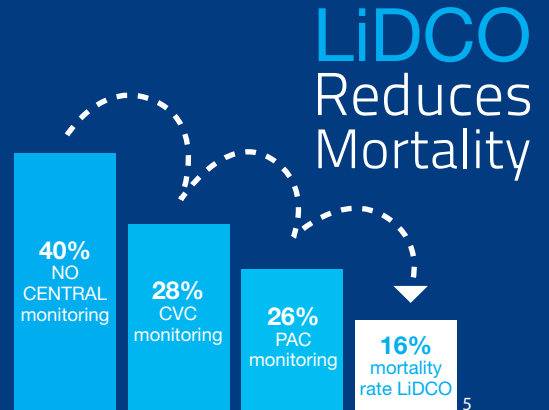
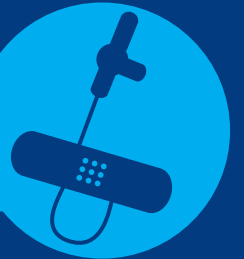
CNAP

Non-Invasive



Calibrate

Minimally Invasive



Clinical papers showing improved outcome

Sepsis | Reduced mortality with noninvasive hemodynamic monitoring of shock

Patient Population

ICU shock patients

LiDCO Monitor

LiDCOplus

Trial Design

Observational study comparing no hemodynamic monitoring vs pulmonary artery vs LiDCOplus managed shock patients

Outcome Impact

Treatment of patients using the LiDCOplus monitor significantly reduced the observed mortality rate to 13% against 32% and 20% in the invasively monitored and 37% in the unmonitored patient groups

⁵ Hata J, Stotts C, Shelsky C, Bayman E, Frazier A, Wang J, Nickel E. Reduced mortality with noninvasive hemodynamic monitoring of shock. *J Crit Care.* 2011;26(2):224.E1-8.



A rational approach to fluid therapy in sepsis

Patient Population

Severe sepsis and septic shock

Purpose

The purpose of this consensus is to provide support to the bedside clinician regarding the diagnosis, management and monitoring of shock

Methods

The European Society of Intensive Care Medicine (ESICM) formed a task force of 12 experts

Results

44 consensus statements that can be used at the bedside to diagnose, treat and monitor patients with shock

^{2,3} Marik P, Bellomo R. A rational approach to fluid therapy in sepsis. *Br J Anaesth.* 2016;116(3):339-49.

¹ Reinhart, K., Daniels, R., Kissoon, N. et al. Recognizing Sepsis as a Global Health Priority — A WHO Resolution. *N Engl J Med* 2017; 377:414-41

⁴ Cecconi, M., De Backer, D., Antonelli, M. et al. *Intensive Care Med* (2014) 40: 1795. doi:10.1007/s00134-014-3525-z



Contact us
on how LiDCO
fits into your
Sepsis pathway

☎ 0207 749 1500

✉ info@lidco.com

🌐 www.lidco.com

